



Harvesting the Wind to Power an Economic Boon for Shasta County

ConnectGen is developing the Fountain Wind Project in northeastern Shasta County, near the existing Hatchet Ridge wind farm. Once in operation, the Fountain Wind Project will have a generation capacity of up to 216 megawatts (MW), the equivalent amount of energy to power more than 86,000 homes in the state of California.

Economic Benefits to Shasta County from the Fountain Wind Project

- \$50 million** in property tax revenue over 30 years
- \$3.5 million** in local sales taxes
- More than **200 construction jobs** during peak
- Up to **12 full-time jobs** during project operations
- \$1 million** in community benefit programs

Why Shasta County?

The site has been identified for wind energy development because of its proximity to the existing transmission system with sufficient capacity, a strong wind resource, and favorable site suitability with limited design constraints.

Commitment to Siting the Fountain Wind Project Responsibly and Safely

ConnectGen is committed to responsibly siting the Fountain Wind Project. Below are the following ways in which we will minimize potential environmental impacts of the project.

ROADS

Utilize existing on-site timber roads to the maximum extent feasible and coordinate construction deliveries to minimize impacts

WATER

Designed to preserve water flow and avoid impacts on water quality and erosion

WILDLIFE

Avoid conservation areas and sensitive habitats by completing intensive studies in coordination with state and federal wildlife agencies

SOUND

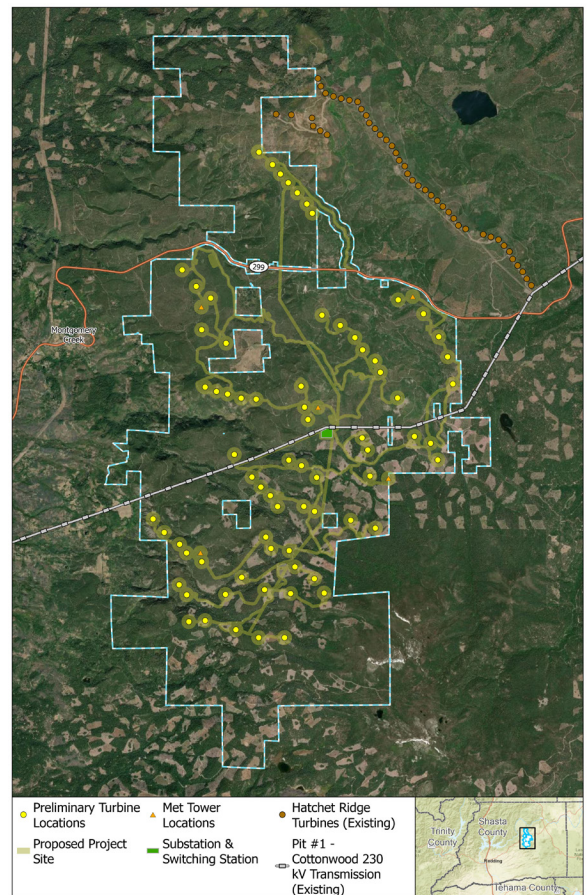
Design the project to meet all Shasta County noise standards

CLOSURE

Implement financial securities that will guarantee responsible decommissioning and restoration at the end of the project's life

ENERGY INDEPENDENCE

Locally-generated clean energy that strengthens the grid through diversity and off-peak energy



Frequently Asked Questions

WHAT IS THE FOUNTAIN WIND PROJECT?

The Fountain Wind Project is a proposed 216 megawatt (MW) wind project in northeastern Shasta County. The project will be located on privately owned timberlands near Highway 299, approximately 6 miles west of Burney. The project is anticipated to be operational by the end of 2023.

WHAT WILL THE FOOTPRINT OF THE PROJECT BE?

Although the project area encompasses approximately 29,500 acres of leased land, the actual project infrastructure will encompass a much smaller area. Specifically, the total permanent impact will be no more than 713 acres. ConnectGen is currently considering up to 72 turbine locations for the project, but the final number of turbines will depend on the size of the turbine chosen for the project.

WHO IS CONNECTGEN?

ConnectGen is a renewable energy company comprised of seasoned energy industry professionals focused on developing wind, solar, and energy storage projects across the United States. With a 50% ownership of 278 MW of operating projects and a project portfolio of over 3,500 MW under development across the United States, ConnectGen's experienced team has a track record of successfully identifying, developing and building renewable energy projects. Our project successes have been built on a foundation of rigorous screening and site selection, collaborative engagement with landowners and host communities, and disciplined execution through development, construction and operations. Rather than having dozens of projects under development across the country, we selectively pursue projects that play to our strengths, allowing our team to bring a high degree of focus to each one.

HOW WILL THE PROJECT CONNECT TO THE ELECTRIC GRID?

The Fountain Wind Project will interconnect to the electrical grid through a new substation and interconnection switchyard that will be built directly adjacent to the existing Pit #1 to Cottonwood 230 kilovolt transmission line. There are no new high-voltage transmission lines required to connect the project to the electric grid. The Pit #1 to Cottonwood line does not connect to the Round Mountain substation and will not require any upgrades or work at the Round Mountain substation.

HOW WILL THE PROJECT IMPROVE FIRE SAFETY?

Extensive precautions are taken to prevent the potential for a fire and to ensure the safety of the project and surrounding areas. Fire safety is being comprehensively addressed both by the project landowner, Shasta Cascade Timberlands (SCT), and Fountain Wind. A Fire Prevention Plan will be created in coordination with Shasta County and CAL FIRE that will be implemented for the life of the Fountain Wind Project. It will provide for emergency response, evacuation, fire agency notification, and enhanced fire prevention in the project area. Specifically, the project will provide added fire safety and prevention through new fire breaks on site, a new extensive network of improved access, and additional on-site personnel to monitor the region. SCT has a very comprehensive fire prevention and safety plan, based on industry best practices, for its timber holdings and has made a summary of its plan available on the project website (www.fountainwind.com).

Please Contact Us with Your Questions, Ideas, and Thoughts

Email: info@fountainwind.com

Phone: (877) 642-2042



CONNECTING POWER, PROJECTS & PEOPLE.